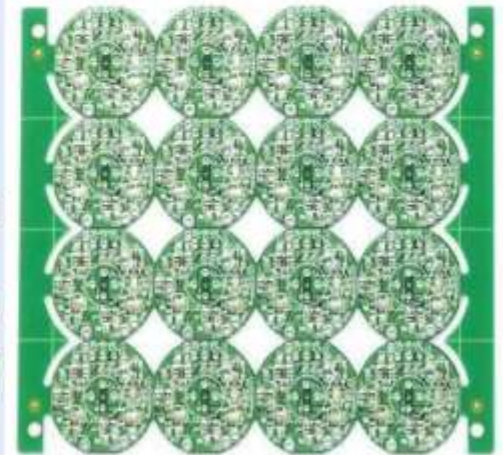


# PCBA/ ELE Components/ Modules



# Metalwork

## Metal Parts / Turning Parts

### | Precision Parts

#### ● Titanium Precision



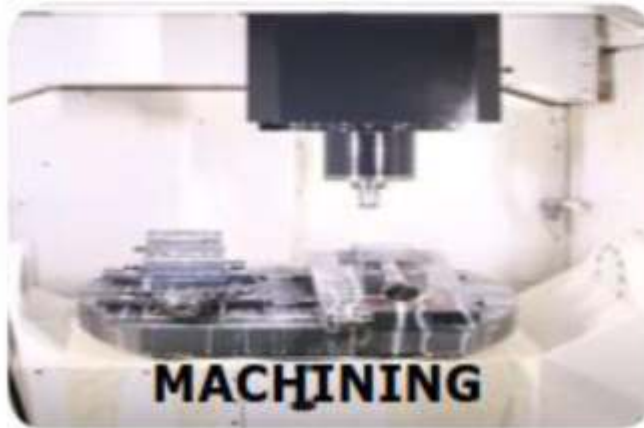
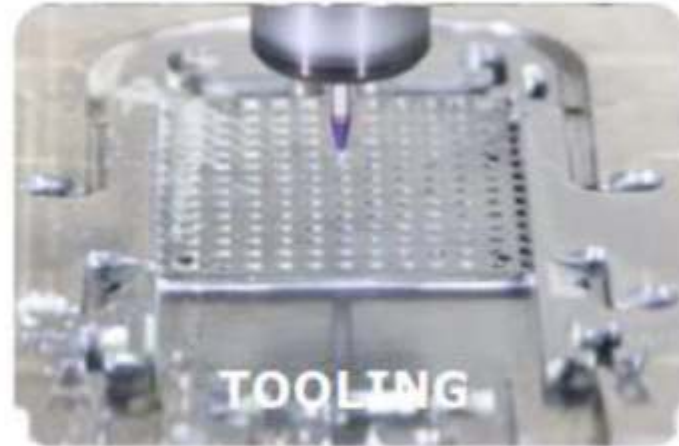
#### ● Stainless Steel Precision



#### ● Beryllium, Brass, Aluminum Precision



# Metalwork



# Metalwork

## Die Casting/ Machining



**Turning part**

